



THE WORLD'S LEADING MANUFACTURER OF LABEL DISPENSERS,
REWINDERS, UNWINDERS, SLITTERS & COUNTING SOLUTIONS

PRICELIST JAN 2022



labelmate

MISSION

LABELMATE's mission is to make label printing processes easier, faster and more effective by developing smart and durable devices that support their operator before, during or after the printing or application process.

HIGHEST QUALITY

The most easy-to-use, heavy-duty, and reliable products of their kind, every **LABELMATE** Product is built to rugged industrial-quality standards. Our product quality is reflected in the unmatched warranty program of 3 years Limited Warranty.

INNOVATION LEADERSHIP

While others copy, we innovate. We offer you the most innovative, complete and reliable product portfolio available on the market.

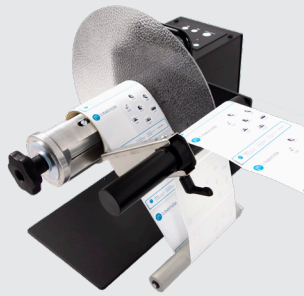
MADE IN BELGIUM, GLOBAL PRESENCE

LABELMATE's sales, support, **product engineering and manufacturing operations** are based in the centre of Europe, in the South of Brussels, Drogenbos, BELGIUM, with products available in more than 70 countries around the world.

Our entire team stays with you all the way.

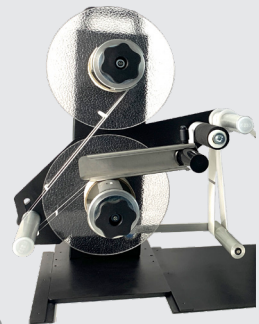
LABEL DISPENSERS	4
LABEL REWINDERS	8
NEW TWIN-MATRIX	16
NEW MC-65-PE	18
SLITTING SOLUTIONS	27
COUNTING SOLUTIONS	29
PRINT MECHANISMS	34
QUICK-CHUCKS & VANES	37

Some of the new, cool stuff...



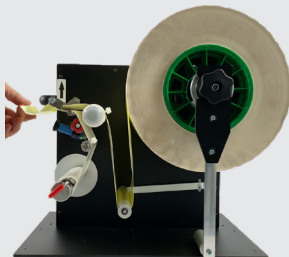
UNI-CAT

THE SMARTEST REWINDER
NOW IN XL-SIZE
P 13/14



TWIN-MATRIX

THE EASIEST WAY TO
PRINT
BORDERLESS
COLOR LABELS
P 16/17



LD-300-UNI

DUAL-MOTOR
DISPENSER FOR
HEAVY LABEL
ROLLS
P 7



MC-65-PE

PEEL-OFF
REWINDER
BACKING-PAPER
P 18

At Labelmate, we do not settle for “good enough”. We strive to make the best products, with high quality components, ensuring your Labelmate product will perform for many years. Our unmatched Warranty Program makes this statement tangible!

All Labelmate products are warranted to the original end-user customer to be free from defects in materials and workmanship. If it is determined by Labelmate that a product has failed under the terms of this warranty, the product will be repaired or replaced at no charge to the customer. Labelmate reserves all rights to determination of coverage and liability under this warranty. The warranty period for all new Labelmate products is outlined below:

Warranty Period	Products Covered
5 YEARS	Label Rewinders Label Unwinders
3 YEARS	Label Counters (mechanical parts only) Label Slitters (mechanical parts only) Label Dispensers Printer mechanisms Power Supply Modules
1 YEAR	Counter Modules Encoders Any products not specified above

- Any device returned for repair or exchange must have an RMA form.
- If you made a mistake in your order, don't worry, we will help you out. However, we will charge a restocking & repacking fee of 15% with a minimum of 25 Euros.
- Prices are in Euros, Ex-Works shipping point. PRICES DO NOT INCLUDE DELIVERY COSTS. Shipping is done with UPS Standard Service unless specified otherwise in the order.
- Drop-shipments (delivery directly to your customer) are possible at the cost of 12 euro, not including the UPS Shipment Cost.
- For orders below 100 euro (delivery cost not included) we will bring a cost of 12 euro into account
- Prices and specifications are subject to change without notice & pictures are non-contractual

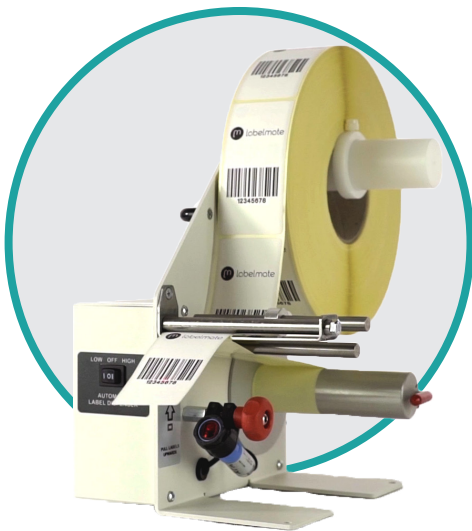
Powered label dispensers

LABELMATE label dispensers are a quick and easy way to **dispense individual labels**. They use a peel and present design: as the material passes through the dispenser, the label is peeled away from the backing material and presented at the front of the unit where it waits to be picked up by the operator. With different models to choose from, these label dispensers **can handle virtually any job** you may have for them.

LD-100 FOR LABELS UP TO 115MM WIDE

LD-200 FOR LABELS UP TO 165MM WIDE

LD-300 FOR LABELS UP TO 218MM WIDE



- ✓ Small footprint to fit on any desk or packaging station
- ✓ Easy setup in less than 30 seconds
- ✓ Available in stainless steel (SS Version) (food & beverage, pharmaceutical market)
- ✓ Selectable speed (high-low) for applications with small or large labels

FEATURES

- All Label Dispensers (except AWB) come with 38mm core holders accepting all cores between 40 and 76mm
- AWB Option comes standard for Cores in diameter 76mm. Available on request for 38,40,44,50,70 and 100mm cores
- Maximum Label Roll Weight: 6 KG
- Minimum Speed: 11 CM/SEC
- External roll diameter LD-100 & LD-200 : 220 mm standard
- External roll diameter LD-100 & LD-200 : 265 mm with AWB option
- External roll diameter LD-100 & LD-200 : 300 mm with LD-DE option
- External roll diameter LD-300 : 300 mm

DIMENSIONS

- LD-100 models W x D x H: 210 x 200 x 270 mm
- LD-200 models W x D x H: 270 x 200 x 270 mm
- LD-300 models W x D x H: 300 x 250 x 295 mm
- Shipping Weight: 6 to 8 KG depending on model & selected options

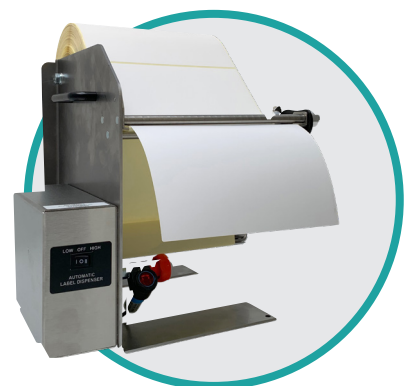
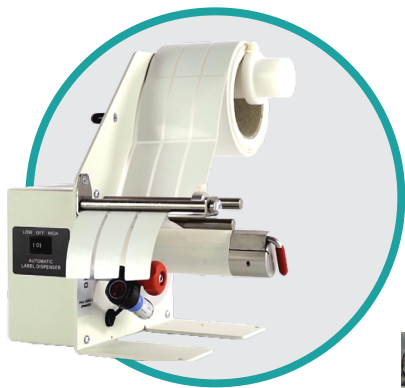
P/N	MODEL	LABEL WIDTH (MM)	MIN LABEL LENGTH (MM)	STAINLESS STEEL	PRICE
-----	-------	------------------	-----------------------	-----------------	-------

REGULAR LABELS

LMD001	LD-100-RS	up to 115	6		590€
LMD003	LD-100-RS-SS	up to 115	6	x	720 €
LMD002	LD-200-RS	up to 165	6		650 €
LMD004	LD-200-RS-SS	up to 165	6	x	775 €
LMD014	LD-300-RS-SS	up to 218	50	x	855 €

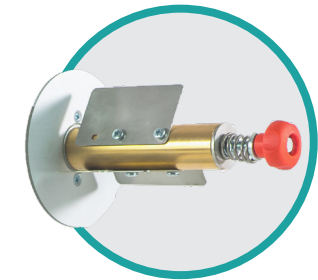
ALL LABELS, INCL TRANSPARENT & BLACK

LMD005	LD-100-U	up to 115	20		690 €
LMD007	LD-100-U-SS	up to 115	20	x	820 €
LMD006	LD-200-U	up to 165	20		750 €
LMD008	LD-200-U-SS	up to 165	20	x	875€
LMD016	LD-300-U-SS	up to 218	50	x	955 €



Label dispenser options

P/N	MODEL	DESCRIPTION	PRICE
LMX445	C-1	Counter option for all Label Dispensers LD-RS, LD-U & SS models	150 €
LMX446	PC-1	Pre-set Counter. Stops the dispenser after a pre-set quantity is reached. Factory installed.	389 €
LMX447	LD-AWB	Adjustable Wearless Brake. Allows to vary the roll tension and finetune present-position. Recommended for small labels. Factory installed. Only available on LD-100/200 models.	95 €
LMX448	LD-FLANGES-220	Per pair, inner & outer flange. Fits all models (not compatible with LD-AWB). Recommended for narrow labels.	30 €
LMX449	LD-FLANGES-300	Per pair, inner & outer flange. To be used on LD-300-models or with LD-DE option. Recommended for narrow labels.	45 €
LMX366	LD-DE	Diameter Extension for LD-100 & LD-200. Allows using label rolls with diameter up to 300 mm. Factory installed.	25 €
LMX367	LD-DE-SS	Diameter Extension for LD-100/200-SS Stainless Steel edition. Factory installed.	25 €
LMX450	EXT.COMMAND	Devices dispenses one label when receiving a signal (contact closure, mono-jack 3,5mm included) Factory installed.	80 €
LMX451	BATTERY PACK	Full Kit for mobile operations. Incl. battery, charger, cables. Autonomy of circa 8h, recharging cycle 8h.	325 €

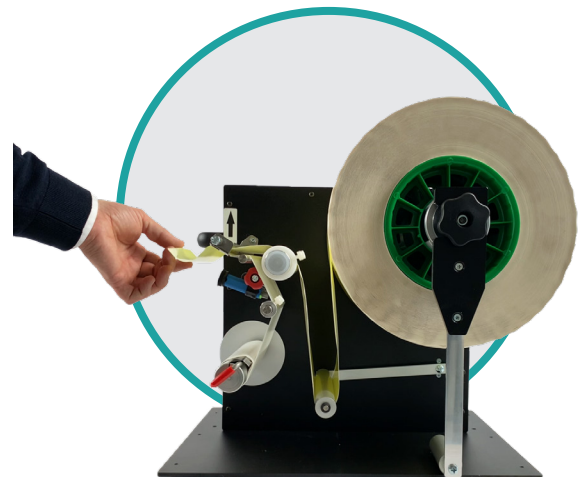


New dispenser LD-300-UNI

The new LD-300-UNI is designed for the most demanding applications ! The unique dual motor functionality ensures smooth label dispensing using heavy label rolls up to 10KG and an outer diameter of maximum 350mm.

LD-300 FOR LABELS UP TO 218MM WIDE

- ✓ Dual motor design for handling heavy rolls
- ✓ Easy setup in less than 30 seconds
- ✓ Can handle inside- and outside-wound labels
- ✓ Soft touch control panel with LED-Status indication
- ✓ End-of-paper detection included



P/N	MODEL	LABEL WIDTH (MM)	MIN LABEL LENGTH (MM)	PRICE
-----	-------	------------------	-----------------------	-------

REGULAR LABELS

LMD020	LD-300-UNI	up to 218	50	2495 €
--------	------------	-----------	----	--------

FEATURES

- Adjustable sensor makes it easy to define the peel-off position on the blade
- Comes with a quick-locking "Quick-Chuck" permitting the fastest loading and unloading of cores and label rolls
- Comes standard for using cores in 76mm. On request available in 38/40/44/70
- Bi-directional for internal & external wound labels
- Max Label Roll weight: 10KG

DIMENSIONS

- W x D x H: 483 x 381 x 400 mm
- Shipping Weight: 36 KG, shipped in wooden crates

Label rewinders

Rewinders are efficient time savers that **rewind material into clean and uniform rolls**.

Label rewinders wind up labels into a roll as they come out of a printer. If you don't use a rewinder, you have to gather up the labels by hand once the printing job is finished. A rewinder is much more **convenient and saves you time**.

CHOOSING YOUR REWINDER

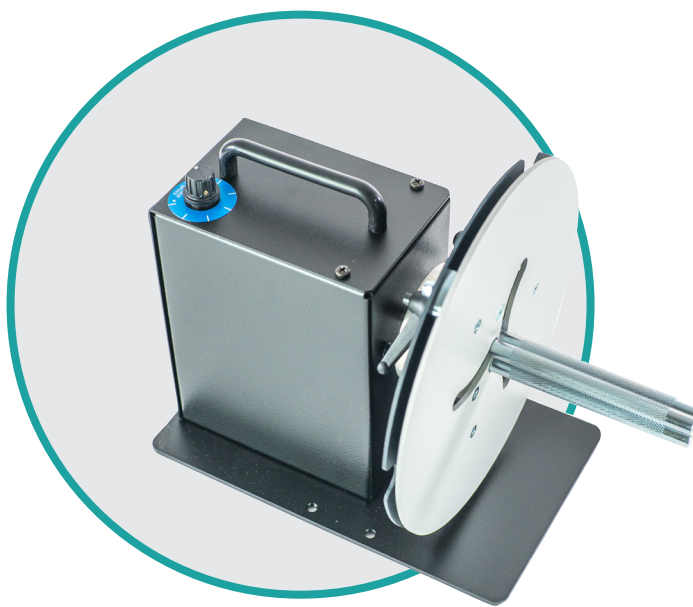
With over 30 different possible configurations, Labelmate offers a rewinder for every application, for all printer types and for every budget. Hereby an overview of the different families and main features.

	LINE	PRINTER TYPE	MAX LABEL WIDTH	MAX SPEED @ START	MAX ROLL DIAMETER
	MINI-CAT	DESKTOP & MID-RANGE LOW-SPEED	125 mm	50 cm/sec	220 mm
	CAT-3/40	INDUSTRIAL & MID-RANGE HIGH-SPEED	270 mm	38-125 cm/sec	280-400 mm
	UNI-CAT	COLOUR & INDUSTRIAL	270 mm	125 cm/sec	280-400 mm
	ZCAT	COLOUR, HIGH RESOLUTION & RFID	255 mm	125 cm/sec	300 mm
	TWIN-MATRIX REMOVAL	COLOUR & PLOTTER	220 mm	125 cm/sec	220 mm

Label rewinders

MINI-CAT REWINDERS MC-10/MC-11

The MINI-CAT rewinders are the world's most popular entry-level label rewinders to be used in combination with small desktop or mid-range barcode printers. With a specially designed bi-directional motor, they offer trouble-free performance at an incredible low cost.



- ✓ Small footprint to fit on any desk
- ✓ Easy setup: attach the labels to the take-up core and ready to start
- ✓ Speed up to 50cm/sec to work with desktop or mid-range barcode printers
- ✓ Bi-Directional
- ✓ Large capacity for roll diameters up to 220mm
- ✓ MC-11 model employs an adjustable core holder (ACH) enabling the use of varying core sizes from 25mm to 101mm
- ✓ Adjust the rewind force with a built-in potentiometer

FEATURES

- Maximum Label Roll Weight: 4 KG
- Maximum Roll Diameter: 220 mm
- Maximum Speed: 50 CM/SEC at the beginning of a 76 mm core roll
- An external command interface on the '+' models to support direct control start/stop by the barcode printer (check compatibility with your printer vendor). The MC+ can react to different types of signals provided by the printer. Selection of the signal nature is done via 2 jumpers on the internal PCB. Four modes selectable: Open Collector High Active, Open Collector Low, Logic Level High (MAX10VDC) & Logic Level Low (MAX10VDC). Factory setting is "Open Collector High", other settings on request.

DIMENSIONS

- W x D x H: 220 x 305 x 195 mm
- Shipping Weight: 6 to 8 KG depending on model & selected options

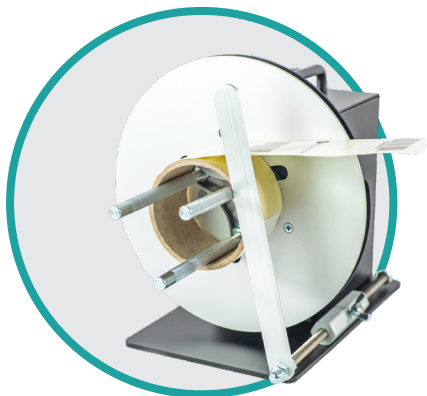
Mini-Cat

MINI-CAT-MODELS

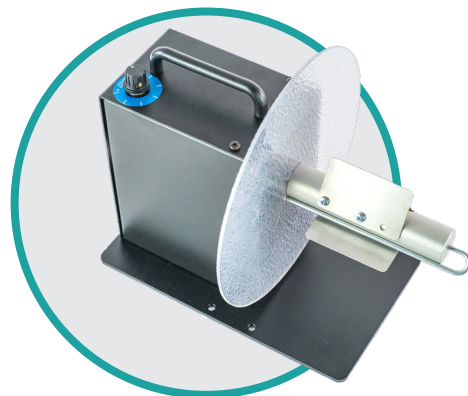
P/N	MODEL	DESCRIPTION	MAX LABEL WIDTH	PRICE
LMR001	MC-10	Standard for rewinding on cores 76mm. On request for core diameters 38/40/44/50/70/100 mm.	125 mm	430 €
LMR002	MC-10-1-INCH	Standard for rewinding on cores 25,4 mm	125 mm	440 €
LMR030	MC-10+	Including External Control. Standard for rewinding on cores 76mm. On request for core diameters 38/40/44/50/70/100 mm.	125 mm	480 €
LMR031	MC-10+-1-INCH	Including External Control. Standard for rewinding on cores 25,4 mm	125 mm	490 €
LMR003	MC-11	With Adjustable Core Holder, for rewinding on cores between 25 and 101 mm diameter.	115 mm	460 €
LMR032	MC-11+	Including External Control. With Adjustable Core Holder, for rewinding on cores between 25 and 101 mm diameter.	115 mm	510 €

MINI-CAT-OPTIONS

P/N	MODEL	DESCRIPTION	PRICE
LMX441	APG-MC	Adjustable Paper Guide. Guides outer edge of label to ensure an even roll edge.	35 €
LMX440	EXT. FLANGE-MC-10	External Flange for MC-10 & MC-10+. Diam.220 mm.	35 €
LMX442	STANDARD SHAFT MC	Standard shaft for MC with vanes, bail & internal flange	65 €
LMX443	ACH-MC	Adjustable Core Holder for rewinding on cores between 25 and 101 mm diameter. With inner flange.	160 €
LMX162	BAIL-MC	Standard on MC-10 & MC-10+. For rewinding on the shaft without using an empty core (coreless)	15 €



MC-11 with optional APG

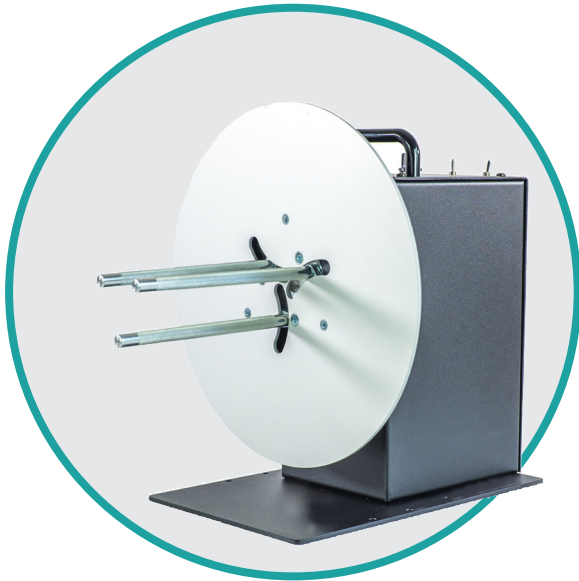


MC-10

Label rewinders

HEAVY-DUTY REWINDERS CAT-3/40G

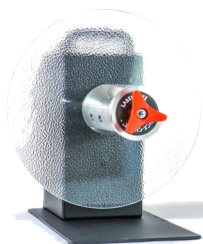
"CAT" (Constant Adjustable Torque™) has made these quiet, easy-to-use rewinders the industry standard. With various core sizes, label widths, roll diameters and options to choose from, there is a rewinder to fit any job you may have.



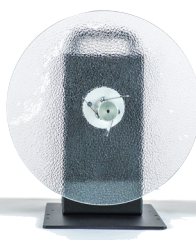
- ✓ Small footprint to fit on any desk
- ✓ Easy setup: attach the labels to the take-up core and ready to start
- ✓ Speed up to 125cm/sec to work with the fastest barcode printers available on the market
- ✓ Bi-Directional for internal & external winding
- ✓ Large capacity for roll diameters up to 400mm

FEATURES

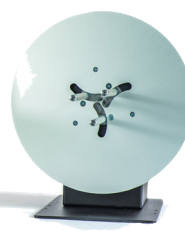
- Settings for Torque/speed and direction via the Control Panel
- CAT-3 with custom build heavy-duty & silent motor. Max. Speed: 125 CM/SEC at the beginning of a 76 mm core roll
- CAT-40G with powerfull Gear-motor for high torque. Max. Speed: 38 CM/SEC at the beginning of a 76 mm core roll
- The CAT-3-Standard has a vane-style core Holder
- The CAT-3-ACH employs an adjustable core holder enabling the use of varying core sizes, for maximum flexibility
- The CAT-3-CHUCK includes a quick-locking "Quick-Chuck" core chuck permitting the fastest loading and unloading of cores and label rolls
- CHUCK/STANDARD/10-INCHES models come standard for using cores in 76mm. On request available in 38/40/44/50/70 mm. See page 33 "chucks and vanes" for item configuration



CAT-3-CHUCK



CAT-3-STANDARD



CAT-3-ACH

Heavy-Duty-Cat

CAT-3/40-MODELS

P/N	MODEL	DESCRIPTION	MAX LABEL WIDTH	MAX ROLL DIAM	MAX WEIGHT	PRICE
LMR004	CAT-3-STANDARD	Standard for 76mm cores (38/40/44/50/70/100mm available) Size W x D x H:300 x 350 x 320 mm	155 mm	300 mm	8 KG	725 €
LMR005	CAT-3-ACH	Adjustable Core Holder for using any core diameter between 25 & 101 mm Size W x D x H:280 x 310 x 310 mm	155 mm	280 mm	7 KG	790 €
LMR006	CAT-3-CHUCK	Easy-Loading Quick-Chuck for 76mm cores (38/40/44/70mm available) Size W x D x H:300 x 385 x 320 mm	170 mm	300 mm	10 KG	930 €
LMR006/ LMX484	CAT-3-CHUCK		220 mm	300 mm	10 KG	990 €
LMR006/ LMX485	CAT-3-CHUCK		270 mm	300 mm	10 KG	1060 €
LMR007	CAT-3-10-INCHES	Standard for 76mm cores (38/40/44/50/70mm available) Size W x D x H:300 x 455 x 320 mm	255 mm	300 mm	10 KG	805 €
LMR008	CAT-3-1-INCH	For 25.4mm cores Size W x D x H:220 x 350 x 280 mm	155 mm	220 mm	8 KG	740 €
LMR009	CAT-40G	Easy-Loading Quick-Chuck for 76mm cores (38/40/44/70/100mm available) Size W x D x H:400 x 450 x 460 mm	170 mm (optional 220 & 270)	400 mm	14 KG	1525 €

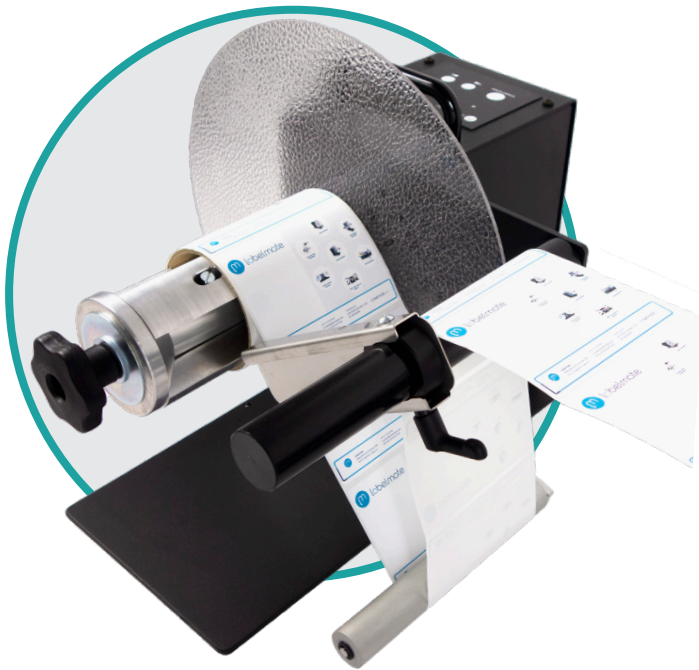
CAT-3/40-OPTIONS

P/N	MODEL	DESCRIPTION	PRICE
LMX444	APG-CAT	Adjustable Paper Guide, Guides the outer edge of the label web to ensure an even roll edge.	40 €
LMX579	UNIVERSAL- ALIGNMENT PLATE for any desktop Thermal Transfer printer		70 €
LMX491	STANDARD SHAFT	Standard shaft with vanes, internal and external flanges	115 €
LMX492	10" SHAFT	10-Inches shaft with vanes, internal and external flanges.	150 €
LMX500	ACH-CAT	Adjustable Core Holder for any core size from 25 to 101mm. With inner flange.	160 €
LMX501	BAIL STD	For rewind on shaft. No core is needed.	20 €
LMX502	BAIL 10"	For rewind on 10-inches shaft. No core is needed	25 €
LMX472	FOOT SWITCH	To start and stop the unit	95 €
LMX546	1' SHAFT	1 Inch shaft with vanes, internal and external flanges	115 €

Label rewinders

UNIVERSAL & INTELLIGENT UNI-CAT

The new UNI-CAT is the smartest and most "UNI-VERSATILE" rewinder/unwinder in the Labelmate product range ! With various core sizes, label widths, roll diameters and options to choose from, there is a rewinder/unwinder to fit any job you may have. The new UNI-CAT replaces all CAT-3-TA models (with Tension Arm) and CAT-4 models.



- ✓ Self-teaching to work as rewinder or unwinder
- ✓ Supports back-feed process for colour inkjet & tension sensitive printers
- ✓ Auto-Speed Adjustment to align with printer speed
- ✓ Speed up to 125cm/sec to work with the fastest bar-code printers available
- ✓ Bi-Directional for internal & external winding
- ✓ New maintenance free, soft-touch control panel with LED-Status-Indicators
- ✓ Standard with paper guide for straight and tight label rolls, no flanges needed

FEATURES

- New maintenance free, soft-touch control panel with LED-Status-Indicators
- Seamlessly detecting & following printer activity: rewinding, idle and unwinding
- Future Proof Design due to interchangeable shafts, depending your applications
- UNI-CAT-Standard has a Vane-style core Holder
- UNI-CAT-ACH employs an adjustable core holder enabling the use of varying core sizes, for maximum flexibility
- UNI-CAT-CHUCK includes a quick-locking "Quick-Chuck" permitting the fastest loading and unloading of cores and label rolls
- CHUCK/STANDARD/10-INCHES models come standard for using cores in 76mm. On request available in 38/40/44/50/70 mm. See page 33 "chucks and vanes" for item configuration
- All models come standard with the Adjustable Paper Guide for UNI-CAT, no external flanges required
- The UNI-CAT is a perfect companion for colour inkjet printers and industrial Thermal Transfer Printers

DIMENSIONS

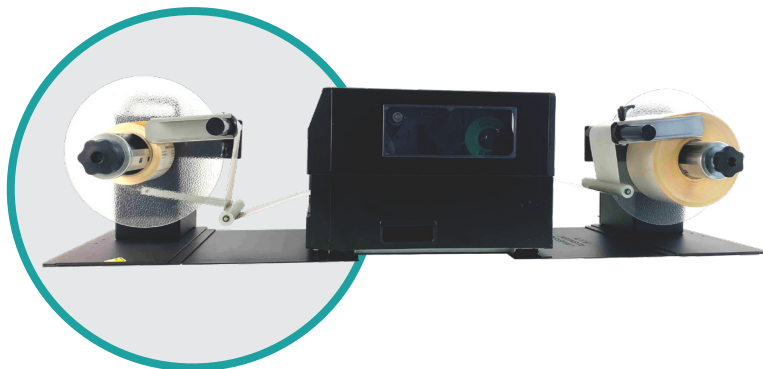
- Standard model: W x D x H: 300 x 350 x 320 mm
- ACH- model: W x D x H: 280 x 310 x 310 mm
- CHUCK-model: W x D x H: 300 x 385 x 320 mm
- 10-INCHES model: W x D x H: 300 x 455 x 320 mm

Universal Uni-Cat

UNI-CAT-MODELS

P/N	MODEL	DESCRIPTION	MAX LABEL WIDTH	MAX ROLL DIAM	MAX WEIGHT	PRICE
LMR042	UNI-CAT-STANDARD	Standard for 76mm cores (38/40/44/50/70/100mm available)	155 mm	300 mm	8 KG	845 €
LMR043	UNI-CAT-ACH	Adjustable Core Holder for using any core diameter between 25 & 101 mm.	155 mm	280 mm	7 KG	945 €
LMR045	UNI-CAT-10-INCHES	Standard for 76mm cores (38/40/44/50/70mm available)	255 mm	300 mm	10 KG	960 €
LMR046	UNI-CAT-1-INCH	For 25,4mm cores	155 mm	220 mm	8 KG	860€
LMR044	UNI-CAT-CHUCK	Easy-Loading Quick- Chuck for 76mm cores (38/40/44/70mm available)	170 mm	300 mm	10 KG	1095 €
LMR044/ LMX484	UNI-CAT-CHUCK		220 mm	300 mm	10 KG	1155 €
LMR044/ LMX485	UNI-CAT-CHUCK		270 mm	300 mm	10 KG	1225 €
LMR047	UNI-CAT-R16	Easy-Loading Quick-Chuck for 76mm cores and 400 mm rolls	170 mm	400 mm	10 KG	1250 €
LMR049	UNI-CAT-XL*	Easy-Loading Quick-Chuck for 76mm cores and 400 mm rolls	170 mm	400 mm	14 KG	1590 €
LMR049/ LMX484	UNI-CAT-XL*		220 mm	400 mm	14KG	1650 €
LMR049/ LMX485	UNI-CAT-XL*		270 mm	400 mm	14 KG	1720 €

* available from 01-03-2022

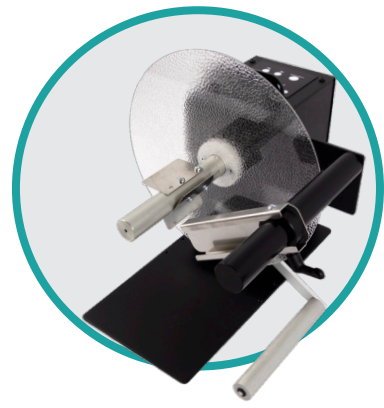


UNI-CAT-OPTIONS

P/N	DESCRIPTION	PRICE
LMX579	UNIVERSAL- ALIGNMENT PLATE for any desktop Thermal Transfer and Inkjet color printer	85 €
LMX580	ALIGNMENT PLATE for EPSON C7500	85 €
LMX566	ALIGNMENT PLATE for ASTRO-QL-300 and OKI PRO1040	57 €
LMX577	ALIGNMENT PLATE for ASTRO QL-120	40 €
LMX492	10-Inches shaft with vanes, internal and external flanges.	150 €
LMX500	Adjustable Core Holder for any core size from 25 to 101mm	160 €
LMX501	For rewind on shaft. No core is needed.	20€
LMX502	For rewind on 10-inches shaft. No core is needed	25 €
LMX546	1 Inch shaft with vanes, internal and external flanges	115 €
LMX491	Standard shaft with vanes, internal and external flanges	115 €



UNI-CAT-ACH

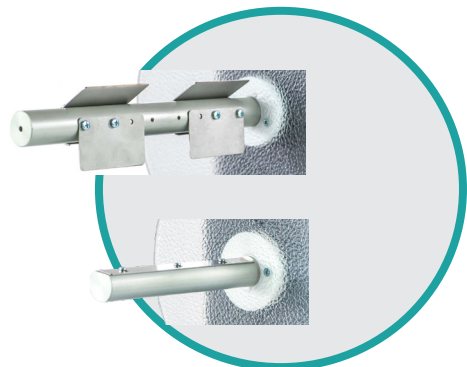


UNI-CAT-STANDARD



UNIVERSAL ALIGNMENT PLATE

10-INCHES



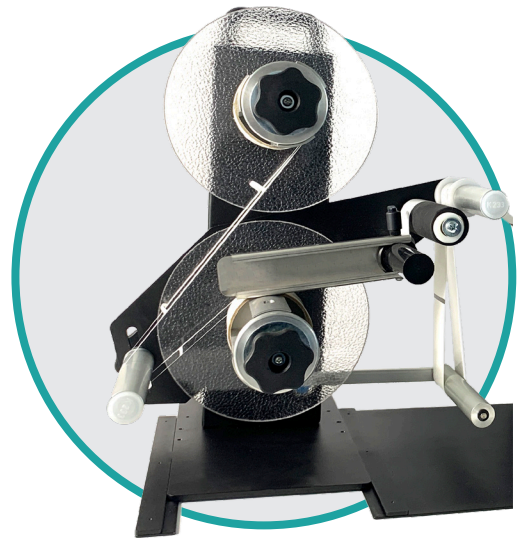
1-INCH

NEW TWIN-MATRIX

TWIN-MATRIX FOR BORDERLESS COLOUR PRINTING AND EASY MATRIX REMOVAL

The new TWIN-MATRIX is the smartest way to separate waste matrix from labels. Either as an off-line station combined with an unwinder or directly in-line with your (colour)label printer. The long tension arm creates a loop of labels to support the backfeeding process from your colour printer. With models in different sizes and orientation, there is a suitable TWIN-MATRIX for any printer model

- ✓ Compact Footprint to fit on any desk
- ✓ Supports back-feed process for colour inkjet & tension sensitive printers
- ✓ Right to Left (R/L) edition for Epson Colorworks Series, TSC, Swift, DTM, etc
- ✓ Left to Right (L/R) edition for Memjet-based solutions like Affinia & VIP
- ✓ Speed up to 125cm/sec to work with the fastest printers available



FEATURES

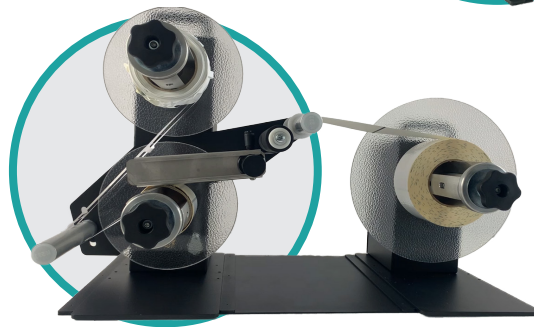
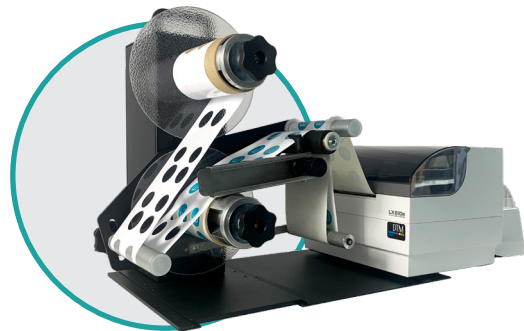
- Tension-Arm in combination with Inductive Sensor Seamlessly detecting & following printer activity
- Includes 2 quick-locking “Quick-Chucks” permitting the fastest loading and unloading of cores and label rolls
- Rubber platen roller to keep media well tensioned
- CHUCK come standard for using cores in 76mm. On request available in other dimensions
- Comes standard with Paper Guide for straight finished label rolls
- Dual-Motor design with separate Tension Control for the labels and the waste matrix

SPECIFICATIONS:

- Weight of the machine: 21 KG up to 24 KG depending on model
- Max. Label Roll Weight: 2 x 5Kg
- Max. Label Roll Diam: 220mm
- Dimensions W x D x H: 40 x 40 x 50 cm
- Power Supply: INPUT 100-240V- 50-60Hz, Output 15V DC-4,6A

TWIN-MATRIX MODELS

P/N	MODEL	DESCRIPTION	MAX LABEL WIDTH	PRICE
LMR057	TWIN-MATRIX-6-R/L	Right to Left paper path, for colour printers (EPSON, TSC, Primera,OKI,...)	170 mm	2290 €
LMR058	TWIN-MATRIX-6-L/R	Left to Right paper path, for colour printers based on Memjet engines (VIP, Affinia,...)	170 mm	2290 €
LMR059	TWIN-MATRIX-8-R/L	Right to Left paper path, for colour printers (EPSON, TSC, Primera,OKI,...)	220 mm	2490 €
LMR060	TWIN-MATRIX-8-L/R	Left to Right paper path, for colour printers based on Memjet engines (VIP, Affinia,...)	220 mm	2490 €
LMR061	TWIN-MATRIX -6-DELUXE-STATION	Complete off-line station, including TWIN-MATRIX-6-INCH, Unwinder UCAT-1-CHUCK, Alignment-Plate	170 mm	3190 €
LMR062	TWIN-MATRIX -8-DELUXE-STATION	Complete off-line station, including TWIN-MATRIX-8-INCH, Unwinder UCAT-1-CHUCK, Alignment-Plate	220 mm	3390 €



TWIN-MATRIX-OPTIONS

P/N	DESCRIPTION	PRICE
LMX579	UNIVERSAL- ALIGNMENT PLATE for any desktop Thermal Transfer and Inkjet color printer	85 €
LMX580	ALIGNMENT PLATE for EPSON C7500	85 €
LMX566	ALIGNMENT PLATE for ASTRO-QL-300 and OKI PRO1040	57 €
LMX577	ALIGNMENT PLATE for ASTRO QL-120	40 €

NEW Peel-Off-Rewinder

MC-65-PE KEEPS THE WORKFLOOR SAFE AND CLEAN

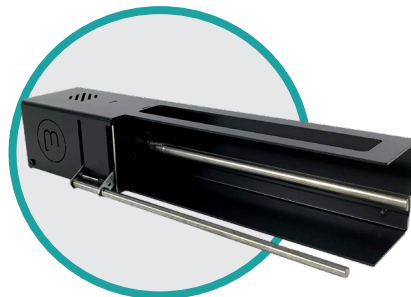
The new MC-65-PE is the purpose build companion for the EPSON COLORWORKS Printers C6XXX with Peel-Off functionality (PE-models). The MC-65-PE is simply placed in front of your printer and will rewind the backing paper from your labels.

- ✓ Large capacity: rewind up to 50 m backing paper
- ✓ Supports back-feed process from your Epson Colorworks Printer
- ✓ Easy accessible to remove the waste backing paper roll in seconds



NEW MC-65-PE

P/N	MODEL	DESCRIPTION	MAX LABEL WIDTH	PRICE
LMR051	MC-65-PE	Peel-off Rewinder for backing paper	220 mm	450 €



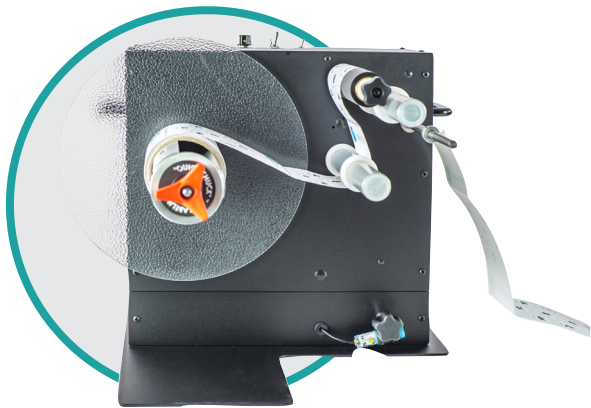
SPECIFICATIONS:

- Weight of the machine: 2,6KG
- Max. Label Roll Diam: 75 mm
- Dimensions W x D x H: 41,44 x 11 x 8 cm
- Power Supply: INPUT 100-240V- 50-60Hz, Output 15V DC

Label rewinders

ZCAT-6/8/10 ZERO TENSION LOOP CONTROLLED LABEL REWINDER

The **ZCAT** Rewinder is the ideal solution for colour inkjet printers that back feed, as well as for customers with a strong focus on print quality (300 or 600dpi applications) and RFID printing applications.



- ✓ A free-hanging "loop" of label stock is created between the printer and the Tensioning Roller thereby eliminating all tension on the paper path & printer
- ✓ A special chassis-mounted adjustable sensor starts and stops the Rewinder based on the optimum depth of the loop.
- ✓ Large capacity for roll diameters up to 300mm
- ✓ Rubber Platen Roller provides adjustable tension for tight finished rolls.
- ✓ Handles labels up to 170, 220 or 255mm wide
- ✓ Available in left to right or right to left rewind direction
- ✓ Speed up to 125cm/sec, supporting fastest printers on the market

FEATURES

- Adjustable sensor supports customising the depth of the loop and distance between rewriter and printer
- Adjustable Tension on the Rubber Platen Roller provides perfect and tight finished label rolls. This makes the ZCAT Highly recommended for customers using label rolls afterwards in automatic label applicators
- Comes with a quick-locking "Quick-Chuck" permitting the fastest loading and unloading of cores and label rolls
- Comes standard for using cores in 76mm. On request available in 38/40/44/70/100 mm. See page 33 "chucks and vanes" for item configuration
- Settings for Torque/speed and direction via the Control Panel
- ZCAT with custom build heavy-duty & silent motor. Max. Speed: 125 CM/SEC at the beginning of a 76 mm core roll
- Bi-directional for internal & external rewinding
- Max Label Roll weight: 9KG

DIMENSIONS

- W x D x H: 483 x 381 x 400 mm
- Shipping Weight: 36 KG, shipped in wooden crates

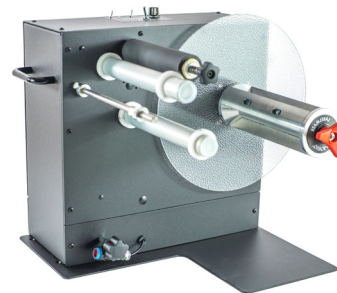
Zero-Tension Zcat

ZCAT-MODELS

P/N	MODEL	DESCRIPTION	MAX LABEL WIDTH	PRICE
LMR035	ZCAT-6-R/L	Right to Left paper path, for Thermal Transfer printers and colour printers (EPSON, TSC, Primera,OKI,...)	170 mm	1425 €
LMR036	ZCAT-6-L/R	Left to Right paper path, for colour printers based on Memjet engines (VIP, Affinia,...)	170 mm	1425 €
LMR037	ZCAT-8-R/L	Right to Left paper path, for Thermal Transfer printers and colour printers (EPSON, TSC, Primera,OKI,...)	220 mm	1475 €
LMR038	ZCAT-8-L/R	Left to Right paper path, for colour printers based on Memjet engines (VIP, Affinia,...)	220 mm	1475 €
LMR039	ZCAT-10-R/L	Right to Left paper path, for Thermal Transfer printers and colour printers (EPSON, TSC, Primera,OKI,...)	255 mm	1625 €
LMR040	ZCAT-10-L/R	Left to Right paper path, for colour printers based on Memjet engines (VIP, Affinia,...)	255 mm	1625 €



ZCAT-R/L-model



ZCAT-L/R-model

ZCAT-OPTIONS

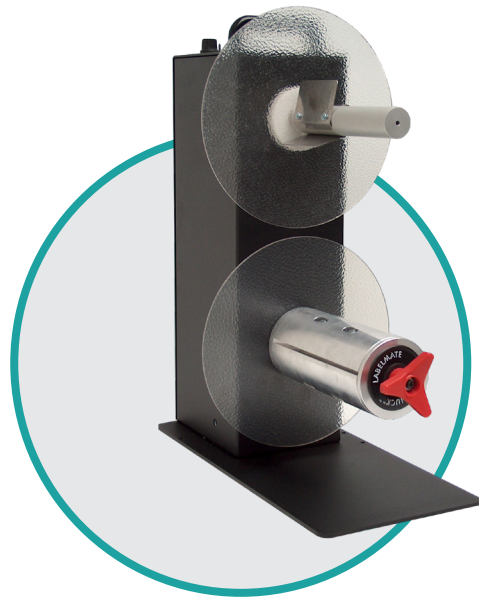
P/N	MODEL	DESCRIPTION	PRICE
LMX579	UNIVERSAL- ALIGNMENT PLATE	for any desktop Thermal Transfer and Inkjet color printe	85 €
LMX580	ALIGNMENT PLATE	for EPSON C7500	85 €
LMX508	Optional 300 mm outer Flange	for Quick-Chuck 76 mm	48 €
LMX549	PC-4	Optional 6-digit pre-set Counter. Allows to count labels or show instantaneous web speed. Factory installed.**	389 €
LMX553	6" PAPER LOOP GUIDE	6" Paper-loop-guide: for guiding thick or curling media into a loop for ZCAT 6	45 €
LMX554	8" PAPER LOOP GUIDE	8" Paper-loop-guide: for guiding thick or curling media into a loop for ZCAT8/10	55 €

Dual Spindle Station

TWIN-CAT-2 DUAL SPINDLE UNWIND/REWIND STATIONS

The Dual Spindle TWIN-CAT-2 is a fast and easy way to deliver label rolls the way you want them! With various label widths and core diameters along with Inspection and Counting options, this all-in-one rewind/unwind Station is the ideal solution for in-house label roll conditioning.

- ✓ Waste matrix removal from die-cut labels inline with your printer or off-line
- ✓ Inside wound to outside wound applications
- ✓ Reverse the order of serialized labels
- ✓ Rewind labels on a different core size
- ✓ Wind small rolls of labels from larger ones
- ✓ Rewind a specific quantity of labels with the optional inspection and pre-set counter options



FEATURES

- 2 Powerful motors, Bi-Directional Unwinding & Rewinding
- 100+ possible configurations to handle any job
- Control Panel for setting direction & speed/torque for each spindle independently
- External Halt Control: Stop/start the unit with foot switch or other device
- Max. Speed: 125 CM/SEC at the beginning of a 76 mm core roll
- Max Label Roll weight: 2 x 5KG
- STANDARD/10-INCHES models come standard for using cores in 76mm. On request available in 38/40/44/50/70/100 mm. See page 33 "chucks and vanes" for item configuration
- STANDARD/1-INCH & 10-INCHES models come standard with inner & outer flanges. We recommend to add optional APG-CAT to the ACH, 1-INCH and CHUCK models with other diameter than 76mm
- Roll Diameter: 2 x 220mm

DIMENSIONS

- W x D x H: 180 x 370 x 470 mm
- Shipping Weight: 20 KG, depending on configuration and options

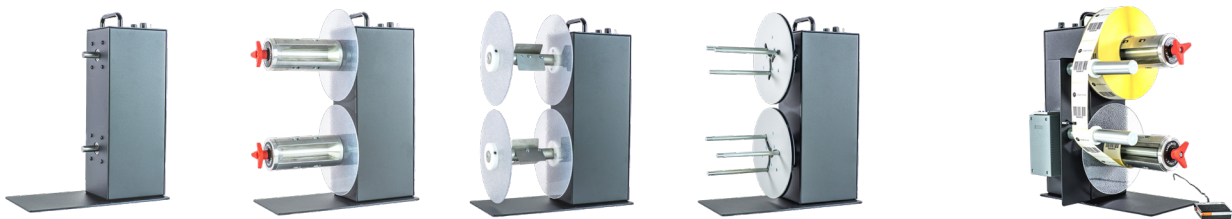
Twin-Cat-2

TWIN-CAT-2-BASE-UNIT

P/N	MODEL	DESCRIPTION	PRICE
LMR016	TWIN-CAT-2 BASE-UNIT	TWIN-CAT-2, Base-Unit without any core holder	1095 €

SELECT 2 CORE HOLDERS

P/N	MODEL	DESCRIPTION	MAX LABEL WIDTH	PRICE
LMX460	1-INCH	25,4 mm (1") standard shaft and flanges.	155 mm	75 €
LMX461	STANDARD	Standard shaft with vanes and flanges.	155 mm	75 €
LMX462	10-INCHES	Standard shaft with vanes and flanges.	255 mm	150 €
LMX463	ACH-TWIN	Adjustable core holder shaft for cores from 25 to 101 mm. * cannot be mixed with another type.	155 mm	180 €
LMX464	CHUCK – C-76170	Quick-Chuck shaft in 76 mm core diameter and 170 mm length and inner flange.	170 mm	290 €
LMX465	CHUCK – C-76220	Quick-Chuck shaft in 76 mm core diameter and 220 mm length and inner flange.	220 mm	350 €
LMX466	CHUCK – C-76270	Quick-Chuck shaft in 76 mm core diameter and 270 mm length and flanges.	270 mm	420 €
LMX600	CHUCK – C-38170	Quick-Chuck shaft in 38 mm core diameter and 170 mm length and inner flange.	170 mm	290 €
LMX601	CHUCK – C-40170	Quick-Chuck shaft in 40 mm core diameter and 170 mm length and inner flange.	170 mm	290 €
LMX557	CHUCK – C-44170	Quick-Chuck shaft in 44 mm core diameter and 170 mm length and inner flange.	170 mm	290 €



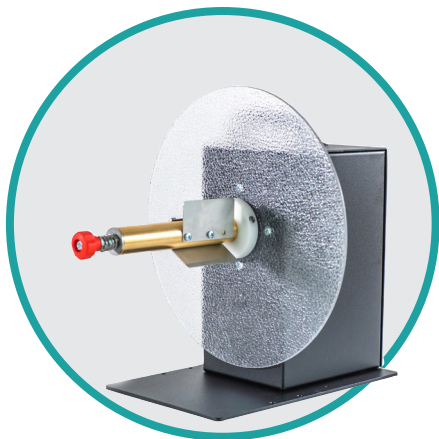
TWIN-CAT-2-OPTIONS

P/N	MODEL	DESCRIPTION	PRICE
LMX470	INSP-1	Bracket with 2 rollers, mounted on the side of the TWIN-CAT. Select this option for Matrix Removal on OKI-type colour printer	150 €
LMX471	INSP-1 +PC-1	Pre-set Counter with adjustable sensor sensitivity, pre-mounted onto the INSP-1 Bracket, ready to plug in and use	539 €
LMX472	FOOT SWITCH	Foot Switch to start/stop the TWIN-CAT-2	80 €
LMX473	OUTER FLANGE	220 mm outer flange for Quick-Chuck in 76 mm	43 €

Label unwinders

Label unwinders provide a convenient way to **manage your supply roll of labels** as it feeds into a printer. You can use larger rolls of labels to minimize your unit label cost. The supply roll of labels does not have to be refreshed as often, **saving time and adding convenience**. External label rolls are always visible, making it easy to monitor the status of your label supply.

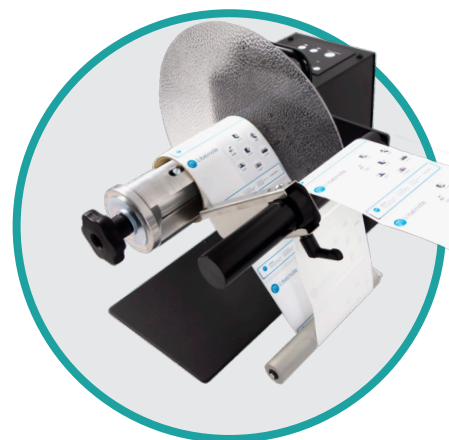
UNPOWERED UNWINDERS UCAT-S, UCAT-S-MINI & UCAT-1



- ✓ UCAT-S (Mini) features a wearless brake to stop the roll at end of job
- ✓ UCAT-1 features adjustable speed/braking to align with printer

POWERED UNWINDER/REWINDER UNI-CAT

- ✓ Self-teaching to work as rewinder or unwinder
- ✓ Supports back-feed process for colour inkjet & tension sensitive printers
- ✓ Auto-Speed Adjustment to align with printer speed
- ✓ Speed up to 125cm/sec to work with the fastest barcode printers available
- ✓ Bi-Directional for internal & external winding

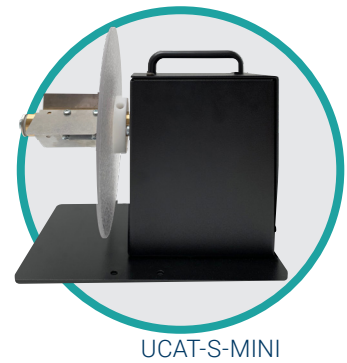
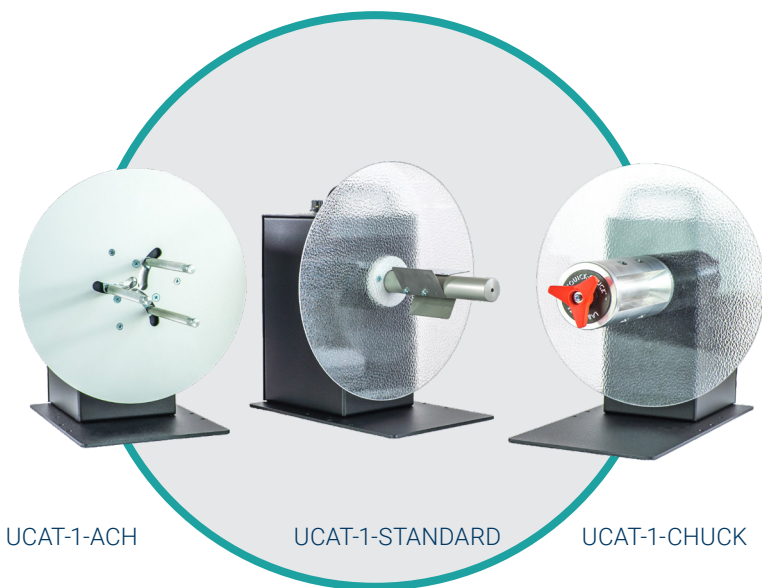


DIMENSIONS

- UCAT-S W x D x H: 300 x 365 x 320
- UCAT-S-MINI W x D x H: 220 x 305 x 195
- Standard & ACH models W x D x H: 300 x 350 x 320
- Chuck models W x D x H: 300 x 385 x 320
- 10-INCHES W x D x H: 300 x 455 x 320
- UCAT-40 W x D x H: 400 x 450 x 460
- STANDARD/10-INCHES/Chuck models come standard for using cores in 76mm. On request available in 38/40/44/50/70 mm. See page 33 "chucks and vanes" for item configuration

UNPOWERED UNWINDERS

P/N	MODEL	DESCRIPTION	MAX LABEL WIDTH (mm)	MAX ROLL DIAM (mm)	MAX WEIGHT	PRICE
LMU014	UCAT-S-MINI	Unwinder with mechanical brake. Standard for 76mm cores (38/40/44/70/100mm available)	125	220	4 KG	205 €
LMU001	UCAT-S	Unwinder with Adjustable Brake. Standard for 76mm cores (38/40/44/50/70/100mm available)	155	300	8 KG	255 €
LMU002	UCAT-1-STANDARD	Self-Powered-Adjustable Speed, Proportional Frictionless Braking. Standard for 76mm cores (38/40/44/50/70/100mm available)	155	300	8 KG	545 €
LMU003	UCAT-1-ACH	Self-Powered-Adjustable Speed, Proportional Frictionless Braking. Adjustable Core Holder for using any core diameter between 25 & 101 mm	155	280	7 KG	607 €
LMU004	UCAT-1-CHUCK	Self-Powered-Adjustable Speed, Proportional Frictionless Braking. Easy-Loading Quick-Chuck for 76mm cores (38/40/44/70/100mm available)	170 (optional 220 & 270)	300	10 KG	769 €
LMU005	UCAT-1-10-INCHES	Self-Powered-Adjustable Speed, Proportional Frictionless Braking. Standard for 76mm cores (38/40/44/50/70/100mm available)	255	300	10 KG	620 €
LMU006	UCAT-1-1-INCH	Self-Powered-Adjustable Speed, Proportional Frictionless Braking. For 25,4 mm (1") cores	155	220	8 KG	545 €



Label unwinders

POWERED UNWINDERS/REWINDERS UNI-CAT

P/N	MODEL	DESCRIPTION	MAX LABEL WIDTH	MAX ROLL DIAM	MAX WEIGHT	PRICE
LMR042	UNI-CAT-STANDARD	Standard for 76mm cores (38/40/44/50/70/100mm available)	155 mm	300 mm	8 KG	845 €
LMR043	UNI-CAT-ACH	Adjustable Core Holder for using any core diameter between 25 & 101 mm.	155 mm	280 mm	7 KG	945 €
LMR045	UNI-CAT-10-INCHES	Standard for 76mm cores (38/40/44/50/70mm available)	255 mm	300 mm	10 KG	960 €
LMR044	UNI-CAT-CHUCK	Easy-Loading Quick- Chuck for 76mm cores (38/40/44/70mm available)	170 mm	300 mm	10 KG	1095 €
LMR044/LMX484	UNI-CAT-CHUCK		220 mm	300 mm	10 KG	1155 €
LMR044/LMX485	UNI-CAT-CHUCK		270 mm	300 mm	10 KG	1225 €
LMR047	UNI-CAT-R16	Easy-Loading Quick-Chuck for 76mm cores and 400 mm rolls	170 mm	400 mm	10 KG	1250 €
LMR049	UNI-CAT-XL*	Easy-Loading Quick-Chuck for 76mm cores and 400 mm rolls	170 mm	400 mm	14 KG	1590 €
LMR049/LMX484	UNI-CAT-XL*		220 mm	400 mm	14KG	1650 €
LMR049/LMX485	UNI-CAT-XL*		270 mm	400 mm	14 KG	1720 €

* available from 01-03-2022

OPTIONS UCAT-1 & UNI-CAT

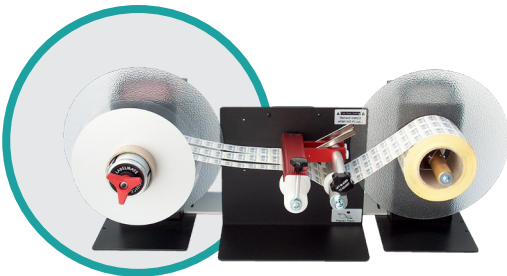
P/N	MODEL	DESCRIPTION	PRICE
LMX457	R-16	Option available on UCAT-1-STANDARD and UCAT-1-CHUCK to accept rolls up to 400mm in diameter. Factory installed.	115 €
LMX579		UNIVERSAL- ALIGNMENT PLATE for any desktop Thermal Transfer and Inkjet color printer	85 €
LMX491	STANDARD SHAFT	Standard shaft for UCAT-1 & UNI-CAT with vanes, internal and external flanges.	115 €
LMX546	1' SHAFT	1-Inch shaft for UCAT-1 & UNI-CAT with vanes, internal and external flanges.	115 €
LMX492	10" -SHAFT	10-Inches shaft for UCAT-1 & UNI-CAT with vanes, internal and external flanges.	150 €
LMX500	ACH-SHAFT	Adjustable Core Holder for any core size from 25 to 101mm in diameter. With inner flange.	160 €

Slitting Solutions

Label slitters are a quick and easy way to produce much faster high quantities of smaller labels as you can print **multiple-across label rolls** and then slit them into separate, individual label rolls. Labelmate offers complete “stand-alone” slitting stations including unwinder, slitter and rewinder) as “in-line” solutions that can be placed at the output of any label printer, **including colour inkjet** printers. Slitters have high-precision, break-away blades for clean, even slitting of material.

S-100 AND S-200 LABEL SLITTERS & STATIONS

- S-100: for media width up to 170mm
- S-200: for media width up to 255mm
- S-STATIONS: including all devices & accessories



- ✓ Reduce drastically total printing cost (printer head lifetime and ribbon usage)
- ✓ Perfect solution for slitting and rewinding narrow labels
- ✓ Up to 5 labels across
- ✓ Can be used in combination with:
 - A barcode printer and a rewinder (inline)
 - A rewinder & an unwinder (offline)

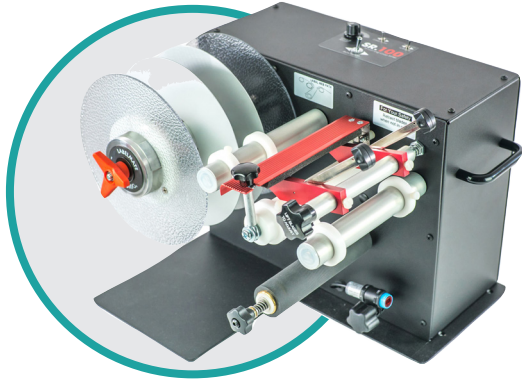
LABEL SLITTERS & STATIONS

P/N	MODEL	DESCRIPTION	LABEL WIDTH (mm)	PRICE
LMS001	S-100	Heavy-Duty Label Slitter. Requires a CAT-3-CHUCK. Size: W x D x H: 355 x 280 x 250 mm.	170	495 €
LMS002	S-200	Heavy-Duty Label Slitter. Requires a CAT-3-CHUCK(270) Size: W x D x H: 355 x 280 x 250 mm.	255	630 €
LMS004	S-100S	Pack Includes: UCAT-S Unwinder; S-100 Slitter; 2 Blade Holders with Blades; CAT-3-CHUCK Rewinder; 76mm; 1 Aluminium and 2 Thin Plastic Separator Plates (220mm diameter); 'LINK': Adjustable Locking Bar to lock units together in position; 15V Power Supply.	170	1655 €
LMS005	S-200S	Pack Includes: UCAT-1-10" Unwinder;- S-200 Slitter;- 3 Blade Holders with blades;- CAT-3-CHUCK-10" Rewinder;- 1 Aluminium and 3 Thin Plastic Separator Plates (220mm diameter);- 'LINK': Adjustable Locking Bar to lock units together in position;- 15V Power Supply.	255	2350 €

Slitting Solutions

SR-6/10 LABEL SLITTER & REWINDER COMBINATION

- SR-6: for media width up to 170mm
- SR-10: for media width up to 255mm



- ✓ Zero-Tension-Loop-Design, supporting back-feeding process from colour inkjet printers
- ✓ Large capacity roll diameters up to 220mm
- ✓ Easy setup and flexible configuration (add and remove blades as required)

SR-6/10 LABEL SLITTER & REWINDER COMBINATION

P/N	MODEL	DESCRIPTION	LABEL WIDTH (mm)	PRICE
LMS006	SR-6-R/L	With easy-loading quick-chuck 76mm, 2 blades, 2 ALU separator plates and outer/inner flanges included (220mm). Roll diam: 220mm Rewind direction: Right to left. Size: W x D x H: 483 x 381 x 400mm	170	1795 €
LMS007	SR-6-L/R	With easy-loading quick-chuck 76mm, 2 blades, 2 ALU separator plates and outer/inner flanges included (220mm). Roll diam: 220mm Rewind direction: Left to Right. Size: W x D x H: 483 x 381 x 400mm	170	1795 €
LMS008	SR-10-R/L	With easy-loading quick-chuck 76mm, 3 blades, 3 ALU separator plates and outer/inner flanges included (220mm). Roll Diam: 220mm Rewind direction: Right to left. Size: W x D x H: 483 x 381 x 400mm	255	2115 €
LMS009	SR-10-L/R	With easy-loading quick-chuck 76mm, 3 blades, 3 ALU separator plates and outer/inner flanges included (220mm). Roll Diam: 220mm Rewind direction: Right to left. Size: W x D x H: 483 x 381 x 400mm	255	2115 €

OPTIONS LABEL SLITTERS

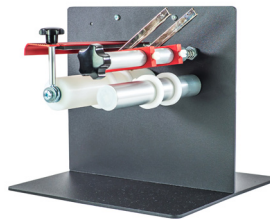
P/N	MODEL	DESCRIPTION	PRICE
LMX549	PC-4	Pre-set Counter for all SR-models. Allows to count labels or show instantaneous web speed. Factory installed.	389 €
LMX514	PC-1	Pre-set Counter for S-100/200. Counts label batch size. Stops Rewinder automatically when job is finished.	389 €
LMX515	BH-1	Additional blade holder assembly. Includes precision high-speed blade.	35 €
LMX516	HSB-10	10 precision high-speed blades for slitters.	20 €
LMX517	LINK SLITTER	Adjustable locking bar to lock units together in position (Unwinder, Slitter & Rewinder).	70 €



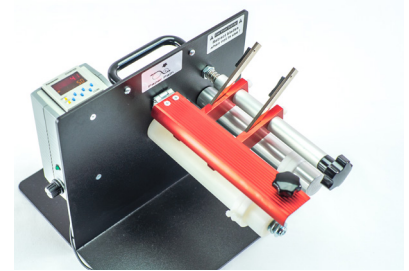
Blade-Holder BH-1



Separator plates



S-100



S-100 with PC-1

LABEL SEPARATOR PLATES FOR SLITTERS

P/N	MODEL (mm)	DESCRIPTION	MATERIAL	PRICE
LMX518	SP-25-220	220mm diameter for 25mm cores	Aluminium	25 €
LMX520	SP-38-220	220mm diameter for 38mm cores	Aluminium	25 €
LMX522	SP-40-220	220mm diameter for 40mm cores	Aluminium	25 €
LMX524	SP-40-300	300mm diameter for 40mm cores	Aluminium	35 €
LMX525	SP-44-220	220mm diameter for 44mm cores	Aluminium	25 €
LMX527	SP-70-220	220mm diameter for 70mm cores	Aluminium	25 €
LMX529	SP-76-220	220mm diameter for 76mm cores	Aluminium	25 €
LMX531	SP-76-300	300mm diameter for 76mm cores	Aluminium	35 €
LMX532	SP-76-400	400mm diameter for 76mm cores	Aluminium	35 €
LMX533	SP-ACH-220	220mm diameter for Adjustable Core Holders	Aluminium	25 €
LMX535	SP-ACH-300	300mm diameter for Adjustable Core Holders	Aluminium	35 €

Counting solutions

Label counters provide a quick and easy way to **count the number of labels on a roll**.

Off-Line counting can be done with either a **counting package** or a self contained **reel-to-reel unit**. Both units allow you to count the number of labels on a given roll, make large rolls of labels into smaller ones, change the direction of the labels coming off the roll or change to a different core size.

RRC-330 REEL-TO-REEL COUNTING STATION



- ✓ Stand-alone counting stations with pre-set counter functionality
- ✓ Accepts rolls with a diameter up to 330mm
- ✓ Adjustable Tension setting on the unwind shaft for reliable counting and tight rolls
- ✓ Optional delivered with an ultrasonic sensor for transparent and dark labels
- ✓ Take-up shaft can be the Adjustable Core Holder (ACH) or Quick-Chuck

FEATURES

- Designed for counting labels with a maximum width of 152 mm.
- 1 Powerful motor, the RRC-units are NOT Bi-Directional
- Max. Speed: 72 CM/SEC at the beginning of a 76 mm core roll, 235 CM/SEC at the end of a 330 mm roll
- Max Label Roll weight: 7 KG
- The STANDARD take-up shaft is a "Quick-Change" shaft to support fast changing of core holder diameter. It comes standard for using cores in 40mm and 76mm. On request available in 38/44/50/70/100 mm. See page 33 "chucks and vanes" for item configuration
- The -ACH take-up shaft employs an adjustable core holder enabling the use of core sizes between 25 and 101 mm
- The CHUCK take-up shaft comes with a "Quick-Chuck" for cores in 76 mm

DIMENSIONS

- W x D x H: 830 x 330 x 330 mm
- Shipping Weight: 26 KG, depending on configuration and options

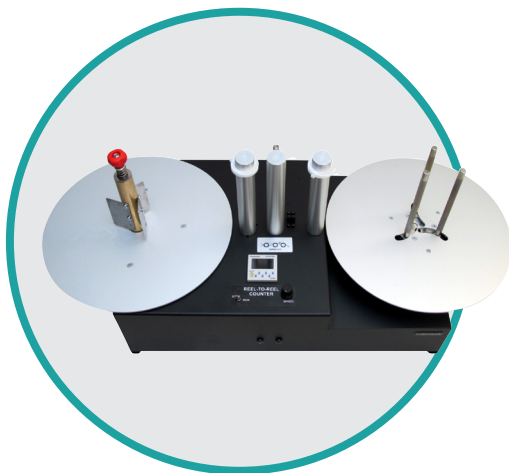
RRC-330

RRC-330-COUNTING STATIONS

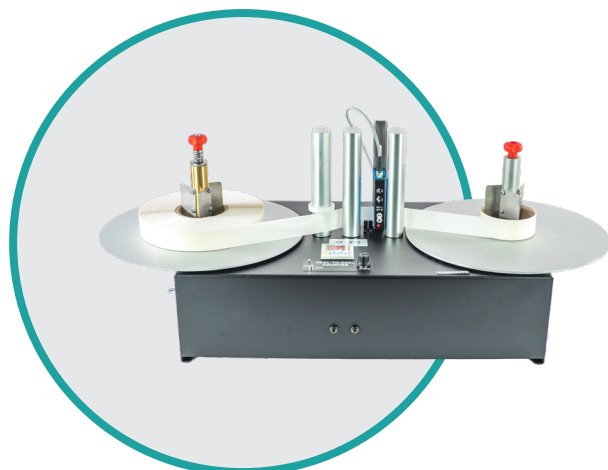
P/N	MODEL	DESCRIPTION	PRICE
LMC001	RRC-330-STANDARD	Reel-to-Reel Counting Station with Standard Take-up shaft. Unwind and rewind on cores of 40 & 76mm. (other diameters available on demand: 38/44/50/70/100 mm)	1650 €
LMC002	RRC-330-ACH	Reel-to-Reel Counting Station with Adjustable Take-up shaft for rewinding on cores between 25 and 101 mm diameter	1850 €
LMC010	RRC-330-CHUCK	Reel-to-Reel Counting Station with Quick-Chuck take-up shaft for rewinding on cores of 76mm (other diameters available on demand) , max label width 170mm	1950 €
LMC010/ LMX484	RRC-330-CHUCK-220	Reel-to-Reel Counting Station with Quick-Chuck take-up shaft for rewinding on cores of 76mm (other diameters available on demand) , max label width 220mm	2250 €
LMC003	RRC-330-U-STANDARD	Standard model with Ultrasonic Sensor mounted on adjustable bracket. For counting transparent, black and special shaped labels	2550€
LMC004	RRC-330-U-ACH	ACH model with Ultrasonic Sensor mounted on adjustable bracket. For counting transparent, black and special shaped labels	2750 €
LMC011	RRC-330-U-CHUCK	CHUCK model with Ultrasonic Sensor mounted on adjustable bracket. For counting transparent, black and special shaped labels	2950 €

OPTIONS RRC-330

LMX453	NO COUNTER	RRC unit without counter for basic reel-to-reel applications	-200 €
LMX454	Quick-Change-Shaft	Complete take-up shaft with vanes (not available for unwinding)	60 €
LMX452	ENC-RRC	Encoder and special counter that can display both number of labels or the measured length of continuous material.	950 €



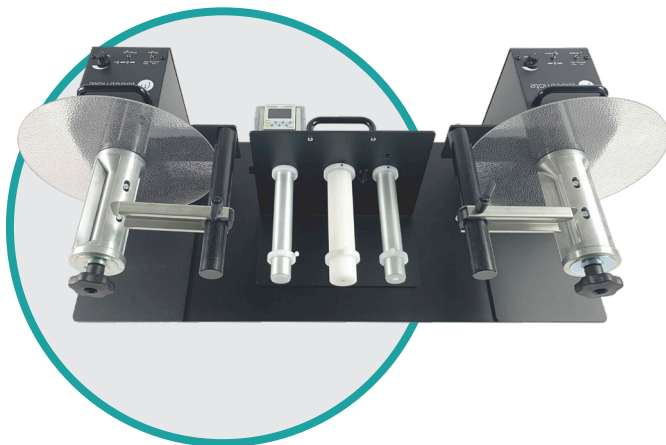
RRC-330-ACH



RRC-330-U-ST

Counting solutions

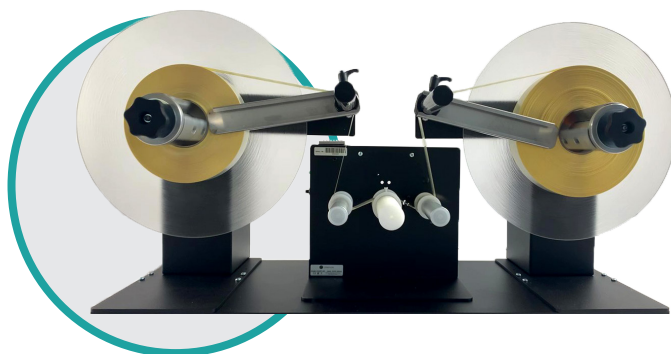
Count-deluxe-stations provide the ideal off-line solution for counting heavy rolls of labels. With these systems, you can verify the number of labels on a roll, divide large rolls into smaller rolls using the preset count/stop feature, and re-tension loose rolls. You can also rewind in both directions (left-to-right and right-to-left) and change internal/external wound orientation from your labels.



- ✓ Variable speed control
- ✓ Adjustable Tension setting on the unwind shaft for reliable counting and tight rolls
- ✓ Bi-directional
- ✓ Pre-set counter function stops the rewinder at the requested quantity
- ✓ U-models with high-end Ultrasonic sensor for transparent and special shaped labels
- ✓ XL-models for rolls up to 400mm diameter

FEATURES

- Designed for counting labels with a maximum width of 170mm (COUNT-100) or 255mm (COUNT-200)
- 2 Powerful motors: reverse your label roll after counting with the click of a switch
- Adjustable paper guides ensure straight and tight finished label rolls
- Devices mounted on a solid base-plate for perfect alignment
- MAX weight of 10 KG on all Count Stations with max 300 mm diameter rolls
- MAX weight of 14 KG on all XL-models
- MAX Speed: 125 CM/SEC at the beginning of a 76 mm core roll
- The take-up shafts come with a "Quick-Chuck" for cores in 76 mm
- Other optional Quick-Chuck core sizes on the COUNT-100 models: 38,40,44 and 70 mm



COUNT-100-DELUXE-R16

Count-deluxe-stations

P/N	MODEL	DESCRIPTION	MAX LABEL WIDTH	MAX ROLL WEIGHT/DIAM	PRICE
LMC008	COUNT-100-DELUXE	Bi-directional label-counter, for rolls up to 300mm, regular labels with gap or blackmark only	170 mm	10 KG/300 mm	3490 €
LMC035	COUNT-100-U-DELUXE	Bi-directional label-counter, for rolls up to 300mm and Ultrasonic sensor to count all labels including transparent	170 mm	10 KG/300 mm	3990 €
LMC036	COUNT-100-DELUXE-XL	Bi-directional label-counter, for rolls up to 400mm, regular labels with gap or blackmark only	170 mm	14 KG/400 mm	3990 €
LMC037	COUNT-100-U-DELUXE-XL	Bi-directional label-counter, for rolls up to 400mm and Ultrasonic sensor to count all labels including transparent	170 mm	14 KG/400 mm	4490 €
LMC038	COUNT-200-DELUXE	Bi-directional label-counter, for rolls up to 300mm, regular labels with gap or blackmark only	255 mm	10 KG/300 mm	3990 €
LMC039	COUNT-200-U-DELUXE	Bi-directional label-counter, for rolls up to 300mm and Ultrasonic sensor to count all labels including transparent	255 mm	10 KG/300 mm	4490 €
LMC040	COUNT-200-DELUXE-XL	Bi-directional label-counter, for rolls up to 400mm, regular labels with gap or blackmark only	255 mm	14 KG/400 mm	4490 €
LMC041	COUNT-200-U-DELUXE-XL	Bi-directional label-counter, for rolls up to 300mm and Ultrasonic sensor to count all labels including transparent	255 mm	14 KG/400 mm	4990 €

IMPORTANT: LEAD-TIME ON REQUEST

COUNT-LABEL COUNTERS

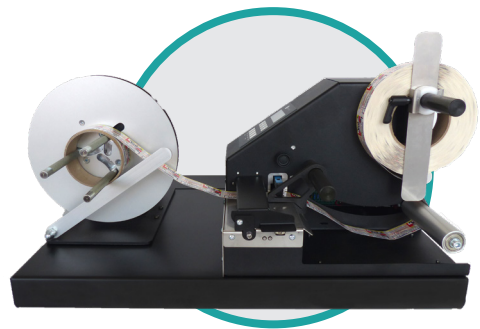
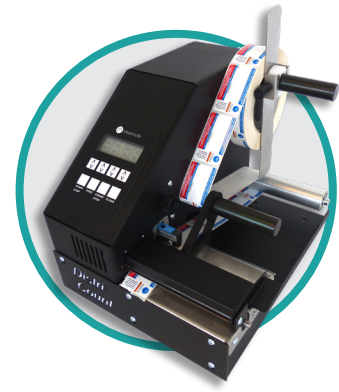
P/N	MODEL	DESCRIPTION	MAX LABEL WIDTH (mm)	PRICE
LMC005	COUNT-100	PC-1 Preset Counter with adjustable counter sensitivity. Counts single labels or pre-set batch quantity. Can Stop rewinder (CAT-3) when job is finished. W x D x H: 355 x 280 x 250 mm	170	659 €
LMC006	COUNT-200	PC-1 Preset Counter with adjustable counter sensitivity. Counts single labels or pre-set batch quantity. Can Stop rewinder (CAT-3) when job is finished. W x D x H: 435 x 280 x 250 mm	255	805 €
LMC007	COUNT-100-U	COUNT-100 with Ultrasonic Sensor mounted on adjustable bracket. For counting transparent, black and special shaped labels	170	1564 €

Distri-Count

Unique Label Counter, counting precise from the 1st label and presenting the requested number of labels on tear-off bar. With a softkey control panel and large display, the Distri-Count will present you the requested number of labels or count your label roll before restocking it.

DISTRICOUNT LABEL-COUNTER

- ✓ Softkey control panel and large display for easy entering required quantity of labels
- ✓ Easy Paper Loading with integrated measurement of the label size. Closing the cover after media loading starts the callibration process
- ✓ High-end sensor with adjustable positioning for reliable counting of regular and special shaped labels.
- ✓ Dancer Arm keeps the media well tensioned for accurate and reliable detection and counting
- ✓ In count mode, the Distri-Count will feed and count the entire label roll. Perfect solution to update your inventory before restocking the label roll.
- ✓ Optional integrated rewinder and base plate for perfect alignment. Comes with integrated Power Supply for both devices.
- ✓ Resettable second counter-totalizer included



DISTRICOUNT LABEL COUNTERS

P/N	MODEL	DESCRIPTION	PRICE
LMC030	DISTRIST	Can handle any core size between 25,4 and 76mm. Requires non-transparent labels with gap or black-mark for reliable detection and counting.	1290 €
LMC032	DISTRIST-RW	Complete pack with integrated Base-Plate, MC-11-Rewinder with Adjustable Paper Guide and integrated Power Supply.	1735 €

MEDIA & DIMENSIONS

- Allignement: left aligned
- Max roll diameter: 220 mm
- Core diameter: 25, 38, 40, 44, 50, 76 mm
- Max width : 115 mm
- Min width: 10 mm
- Thickness: 0,08-0,17 mm
- Backing Paper: tearable for use on the tear-off bar
- Max label length: 200 mm
- LMC030: W x D x H: 232 x 295 x 222 mm
- LMC032: W x D x H: 340 x 558 x 266 mm

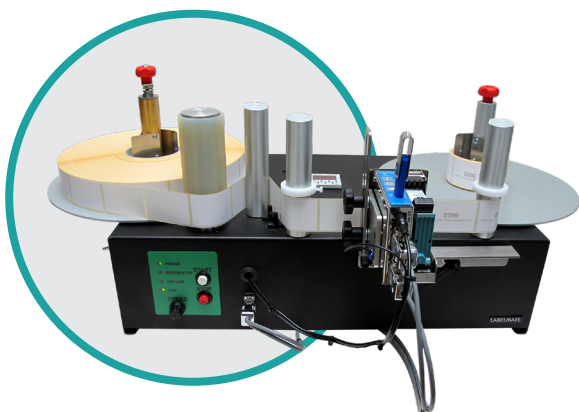
Printing Mechanism

The **LABELMATE PM-300 printer mechanism** is ready to be completed with the hardware of your choice. Some examples are inkjet-heads, laser-encoders, barcode verifiers or RFID encoders.

FEATURES FOR ALL PM-MODELS

- Designed for processing labels with a maximum width of 125 mm
- 1 Powerful motor, the PM-units are NOT Bi-Directional
- Maximum roll diameter : 300 mm
- Max Label Roll weight: 6 KG
- Secured DB-9 Print Head Connector
- Adjustable label guides
- 220-240V- 50-60Hz AC Input
- Label Sensor: Open Collector Output
- come standard for using cores in 76mm. On request available in 38/40/44/70/100 mm. See page 33 "chucks and vanes" for item configuration

PM-300-LS & PM-300-HS



- ✓ Add variable data like barcodes, dates, lot numbers etc at high speeds and extreme low cost by adding the inkjet-head of your choice
- ✓ Available with Ultrasonic sensor for transparent labels
- ✓ Built-In Encoder with a resolution of 0,041 mm
- ✓ Print Speed PM-300-LS: max 150 cm/sec. Roll of 28 cm takes 7 min.
- ✓ Print Speed PM-300-HS: max 235 cm/sec. Roll of 28 cm takes 4,5 min
- ✓ Actual Speed depending on performance of the chosen inkjet-head

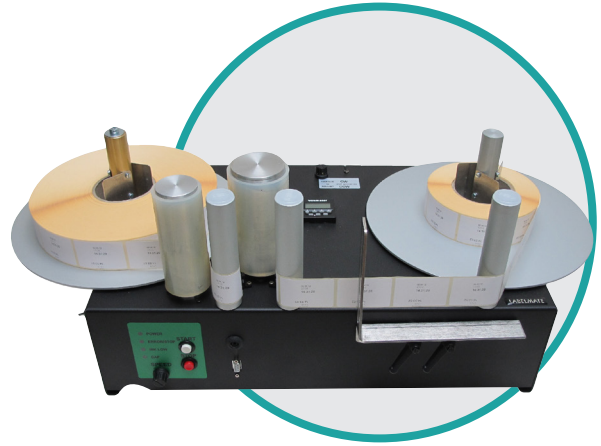
LS & HS-MODELS

P/N	MODEL	DESCRIPTION	MAX SPEED (cm/sec)	PRICE
LMP003	PM-300-LS	Reel to Reel Print Mechanism. Low Speed Model	150	2250 €
LMP004	PM-300-HS	Reel to Reel Print Mechanism. High Speed Model	235	2350 €
LMP007	PM-300-U-LS	LS-With Ultrasonic sensor for transparent labels	150	3100 €
LMP008	PM-300-U-HS	HS-With Ultrasonic sensor for transparent labels	235	3200 €

Pm-300

PM-300-CS & PM-300-CS-STEP

- ✓ Operate at a Constant Adjustable Speed, with a tolerance of +/- 5%
- ✓ Optional encoder with a resolution of 0,041mm for high-precision jobs
- ✓ CS-STEP model has a "1 by 1" mode to stop after each label and advance to the next by a push-button or external command. Perfect platform for RFID-encoding



CS & CS-STEP-MODELS

P/N	MODEL	DESCRIPTION	MAX SPEED (cm/sec)	PRICE
LMP005	PM-300-CS	Reel to Reel Mechanism. Constant Speed Model	40 or 61	3590 €
LMP006	PM-300-CS-STEP	Constant Speed model with "1 by 1" mode	40	3690€

PM-300-OPTIONS

LMX454	Quick-Change Shaft	Complete take-up shaft with vanes. NOT AVAILABLE FOR UNWINDING SHAFT.	60 €
LMX478	ENC PM-CS	Optional built-in encoder with resolution of 0,041mm. For PM-300-CS & PM-300-CS-STEP ONLY.	390 €
LMX474	PC-2	Optional 6-digit pre-set counter. Counts label batch size. Factory installed.	250 €
LMX475	PC-3	Dual function preset counter. Allows to count labels or show instantaneous web speed. Factory installed.	460 €
LMX477	WEB-BC	Mounting bracket and cable for Markoprint (Weber)™ X1-Jet print head.	165 €

DIMENSIONS

- W x D x H: 800 x 380 x 330 mm
- Shipping Weight: 26 KG, depending on configuration and options

Spare Power Supplies

P/N	MODEL	DESCRIPTION	PRICE
SPARE POWER SUPPLIES FOR LD/CAT/UNI-CAT/ZCAT/SR			
LMX537	PS-15V	Spare Power Supply 220-240V – 50Hz DC Output: 15V – 4.33A. EU-PLUG	55 €
LMX537-UK	PS-15V-UK	Spare Power Supply 220-240V – 50Hz DC Output: 15V – 4.33A. UK-PLUG	60 €
LMX056	PS-18V	High-Speed Power Supply to increase speed of Label Dispensers	90 €
SPARE POWER SUPPLIES FOR MC-10/MC-11 (+)			
LMX550	PS-MC-15V (NEW)	Power Supply for MC/MC+ 15V-DC, 1600mA For rewinders with speed/torque control adjustment, sold as from 26.01.2018. EU-Plug.	40 €
LMX551	PS-MC-15V-UK (NEW)	Power Supply for MC/MC+ 15V-DC, 1600mA For rewinders with speed/torque control adjustment, sold as from 26.01.2018. UK-Plug.	40 €
LMX060	PS-MC	220-240V - 50Hz Power Supply for MC with slide switch 3-12V. EU-Plug. Old model.	40 €
LMX061	PS-MC-UK	220-240V - 50Hz Power Supply for MC with slide switch 3-12V. UK-Plug. Old model.	40 €
SPARE POWER SUPPLIES FOR TWIN-CAT-2			
LMX504	PS-15V	TWIN-CAT Spare Power Supply, 230V - 50Hz DC. Output 15V-4,6A EU-PLUG	120 €
LMX504-UK	PS-15V-UK	TWIN-CAT Spare Power Supply, 230V - 50Hz DC. Output 15V-4,6A UK-PLUG	120 €

Quick-Chucks & Vanes

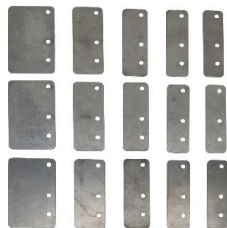
For Quick Loading & Unloading of label rolls, our precision & maintenance free “Quick-Chucks” Core Chucks support the mounting or removing of a label roll in seconds. For applications with heavy label rolls, regular roll changes & for holding multiple cores during slitting operations.

QUICK-CHUCKS

- ✓ For fast loading & unloading of label rolls
- ✓ Suitable for heavy label rolls
- ✓ Different sizes and diameters available for any application
- ✓ Fit onto 15,85mm diameter motor shaft



VANES FOR FIN-STYLE CORE HOLDERS



- ✓ Stainless Steel Plates to mount on Standard and 10-INCHES core holders
- ✓ 76 mm Vanes are placed by default
- ✓ Available for all common core sizes: 38/40/44/50/70/76/100 mm
- ✓ Sets of 3 vanes, 2 sets required for 10-INCHES

Quick-Chucks & Vanes

QUICK-CHUCKS & FLANGES

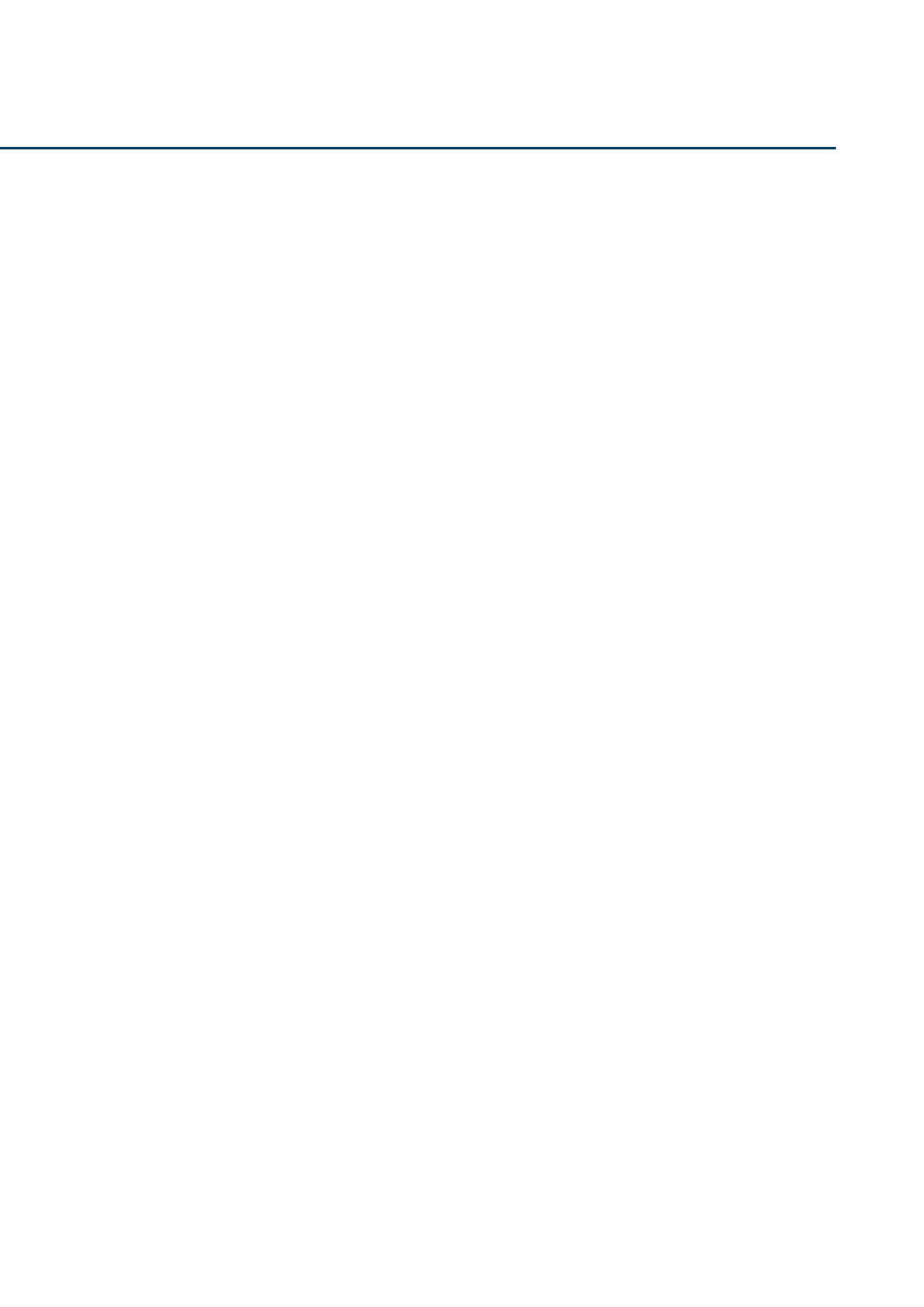
P/N	MODEL	DIAMETER (mm)	WIDTH (mm)	PRICE
LMX479	C-38170	38	170	290€
LMX480	C-40170	40	170	290 €
LMX481	C-44170	44	170	290 €
LMX482	C-70170	70	170	290 €
LMX483	C-76170	76	170	290 €
LMX484	C-76220	76	220	350 €
LMX485	C-76270	76	270	420 €
LMX486	C-100170	100	170	420 €
LMX506	220mm outer Flange for "Quick-Chuck" 76mm core diameter.			45 €
LMX144	220mm inner Flange for "Quick-Chuck" 70, 76 & 100mm core diameter.			25 €
LMX507	220mm inner Flange for "Quick-Chuck" 38, 40 & 44mm core diameter.			30 €
LMX508	300mm outer Flange for "Quick-Chuck" 76mm core diameter.			95 €
LMX509	300mm inner Flange for "Quick-Chuck" 70, 76 & 100mm core diameter.			35 €
LMX510	300mm inner Flange for "Quick-Chuck" 38, 40 & 44mm core diameter.			35 €
LMX511	400mm outer Flange for "Quick-Chuck" 76mm core diameter.			105 €
LMX512	400mm inner Flange "Quick-Chuck" 76mm core diameter.			60 €
LMX513	400mm inner Flange for "Quick-Chuck" 38, 40 & 44mm core diameter.			60 €

When you need a rewinder or unwinder with a quick-chuck other than 76mm, you can refer to the P/N above. Example: CAT-3-CHUCK with a 40mm diameter chuck becomes LMR006/LMX480. Price based on difference with LMX483.

VANES

P/N	MODEL	DESCRIPTION	PRICE
LMX493	VANES 38	Set of 3 vanes (fins) for 38 mm cores.	15 €
LMX494	VANES 40	Set of 3 vanes (fins) for 40 mm cores.	15 €
LMX495	VANES 44	Set of 3 vanes (fins) for 44 mm cores.	15 €
LMX496	VANES 50	Set of 3 vanes (fins) for 50 mm cores.	15 €
LMX497	VANES 70	Set of 3 vanes (fins) for 70 mm cores.	15 €
LMX498	VANES 76	Set of 3 vanes (fins) for 76 mm cores.	15 €
LMX499	VANES 100	Set of 3 vanes (fins) for 100 mm cores.	15 €

When you need a rewinder or unwinder with vanes other than 76mm, you can refer to the P/N above. Example: MC-10 with vanes 44mm, becomes LMR001/LMX495. No additional cost.





Our entire team stays with you all the way.
Don't hesitate to contact us:

+32 2 375 69 60

brussels@labelmate.com

Chaussée de Ruisbroek 290
1620 Drogenbos (Belgium)

www.labelmate.com